

Operator's Manual



optris[®] CTlaser

LT/ LTF/ 05M/ 1M/ 2M/ 3M/ 4M/ MT/ F2/ F6/ G5/ G7/ P7

Infrared thermometer

Optris GmbH & Co. KG
Ferdinand-Buisson-Str. 14
13127 Berlin
Germany

Tel.: +49 30 500 197-0
Fax: +49 30 500 197-10

E-mail: info@optris.com
Internet: www.optris.com



Table of contents

Table of contents	3
1 General Notes	8
1.1 Intended use	8
1.2 Warranty	9
1.3 Scope of delivery	9
1.4 Maintenance	10
1.4.1 Cleaning	10
1.4.2 Handling	10
1.4.3 Storage	10
1.5 Model Overview	11
2 Technical Data	13
2.1 Factory settings	13
2.2 General specifications	15
2.3 Electrical specifications	16
2.4 Measurement specifications	17
2.4.1 LT / LTfast version	17
2.4.2 05M / 1M versions	18
2.4.3 2M models	19
2.4.4 3M models	20

2.4.5	4M / MT / MTH models	21
2.4.6	F2/ F6/ P7 models	22
2.4.7	G5/ G7 models	23
2.5	Optical charts	24
2.5.1	Standard Focus (SF)	25
2.5.2	Far Field (FF)	26
2.5.3	Close Focus (CF1)	27
2.5.4	Close Focus (CF2)	28
2.5.5	Close Focus (CF3)	29
2.5.6	Close Focus (CF4)	30
3	Mechanical Installation	31
3.1	Dimensions	31
3.2	Accessories	34
3.2.1	Air purge collar	34
3.2.2	Mounting bracket	35
3.2.3	Water cooled housing	36
3.2.4	Rail mount adapter for electronic box	37
3.2.5	CoolingJacket Advanced	38
3.2.6	Outdoor protective housing	39
3.2.7	USB kit	40
4	Electrical Installation	41
4.1	Connection of the cables	41

4.1.1	Basic version.....	41
4.1.2	Connector version.....	42
4.2	Pin assignment	43
4.2.1	Connector plug (connector version only).....	43
4.2.2	Electronic board for LT/ LTF/ MT/ F2/ F6/ G5/ G7/ P7 models	44
4.2.3	Electronic board for 05M/ 1M/ 2M/ 3M models.....	45
4.2.4	Electronic board for 4M model.....	46
4.3	Power supply	47
4.4	Cable assembling	47
4.5	Ground connection	49
4.5.1	05M, 1M, 2M, 3M models	49
4.5.2	4M model	50
4.5.3	LT, LTF, MT, F2, F6, G5, G7, P7 models.....	51
4.6	Exchange of the sensing head	52
4.7	Exchange of the head cable	53
4.8	Outputs and Inputs	54
4.8.1	Analog outputs.....	54
4.8.2	Digital Interfaces	56
4.8.3	Relay outputs.....	57
4.8.4	Functional inputs (not for CTlaser 4M)	58
4.8.5	I/O Pins (only for CTlaser 4M)	59
4.8.6	Alarms.....	61
4.8.7	Open collector output / AL2	63

5	Operation	64
5.1	Sensor setup	64
5.2	Aiming laser	78
5.3	Error messages	80
6	IRmobile app	81
7	Software CompactConnect/ CompactPlus Connect	83
7.1	Installation	83
7.2	Communication settings	85
7.2.1	Serial Interface	85
7.2.2	Protocol	85
7.2.3	ASCII-Protocol	86
7.2.4	Save parameter settings	86
8	Basics of Infrared Thermometry	87
9	Emissivity	88
9.1	Definition	88
9.2	Determination of unknown emissivity	88
9.3	Characteristic emissivity	90
Appendix A – Table of emissivity for metals		91
Appendix B – Table of emissivity for non-metals		93
Appendix C – Smart Averaging		94

Appendix D – Declaration of Conformity95

1 General Notes

1.1 Intended use

Thank you for choosing the **optris® CTlaser** infrared thermometer.

The sensors of the optris CTlaser series are noncontact infrared temperature sensors. They calculate the surface temperature based on the emitted infrared energy of objects [**► 8 Basics of Infrared Thermometry**]. An integrated double laser aiming helps to mark the measurement spot on the object surface. This lies within the two laser points.



The CTlaser sensing head is a sensitive optical system. Please use only the thread for mechanical installation.



- Avoid abrupt changes of the ambient temperature.
- Avoid mechanical violence on the head – this may destroy the system (expiry of warranty).
- If you have any problems or questions, please contact our service department.



Read the manual carefully before the initial start-up. The producer reserves the right to change the herein described specifications in case of technical advance of the product.



► All accessories can be ordered according to the referred part numbers in brackets [].

1.2 Warranty

Each single product passes through a quality process. Nevertheless, if failures occur, please contact the customer service at once. The warranty period covers 24 months starting on the delivery date. After the warranty is expired the manufacturer guarantees additional 6 months warranty for all repaired or substituted product components. Warranty does not apply to damages, which result from misuse or neglect. The warranty also expires if you open the product. The manufacturer is not liable for consequential damage or in case of a non-intended use of the product.

If a failure occurs during the warranty period the product will be replaced, calibrated or repaired without further charges. The freight costs will be paid by the sender. The manufacturer reserves the right to exchange components of the product instead of repairing it. If the failure results from misuse or neglect the user must pay for the repair. In that case you may ask for a cost estimate beforehand.

All infrared measurement systems from Optris undergo an extensive end-of-line test before delivery. This final quality control ensures that every product meets our strict performance and reliability standards. By rigorously testing each unit, we guarantee accurate and reliable operation in accordance with Optris' specifications.

1.3 Scope of delivery

- CTlaser sensing head with connection cable and electronic box
- Mounting nut and mounting bracket (fixed)
- Operators manual

1.4 Maintenance

1.4.1 Cleaning

Blow off loose particles using clean compressed air. The lens surface can be cleaned with a soft, humid tissue (moistened with water) or a lens cleaner (e.g. Purosol or B+W Lens Cleaner).



Never use cleaning compounds which contain solvents (neither for the lens nor for the housing).

1.4.2 Handling

When cleaning the optics of the infrared measurement device, gloves must be worn at all times while handling all lens materials. IG glasses can be toxic and absorbed through the skin. For all IG materials, care should be taken when handling, as these materials are soft and susceptible to scratches.

Do not swallow, inhale, or ingest infrared lens material. In case of fire and/or explosion, do not breathe fumes. Releases toxic selenium oxide and arsenide fumes if heated at high temperatures. Releases toxic hydrogen selenide gas if in contact with acid.

1.4.3 Storage

Infrared pyrometers, and especially the optics, should be stored in a low-humidity environment, and extended exposure to UV light should be avoided to avoid the development of haziness on the surface of the optics. Contact with high temperatures, strong acids, or bases should be avoided.

1.5 Model Overview

The sensors of the CTlaser series are available in the following basic versions:

Model	Model codes	Measurement range	Spectral response	Typical applications
LT	LT	-50 to 975 °C	8-14 µm	non-metallic surfaces
F	LTF	-50 to 975 °C	8-14 µm	fast processes
05M	05M	1000 to 2000 °C	0.525 µm	measurement of liquid metal
1M	1ML	485 to 1050 °C	1.0 µm	metals and ceramic surfaces
	1MH	650 to 1800 °C		
	1MH1	800 to 2200 °C		
2M	2ML	250 to 800 °C	1.6 µm	metals and ceramic surfaces
	2MH	385 to 1600 °C		
	2MH1	490 to 2000 °C		
3M	3ML	50 to 400 °C	2.3 µm	metals at low object temperatures (from 50 °C)
	3MH	100 to 600 °C		
	3MH1	150 to 1000 °C		
	3MH2	200 to 1500 °C		
4M	3MH3	250 to 1800 °C	2.2-6 µm	metals at low object temperatures (from 0 °C) and very fast processes
	4ML	0 to 500 °C		

MT	MT	200 to 1450 °C	3.9 µm	measurement through flames
	MTH	400 to 1650 °C		
F2	F2	200 to 1450 °C	4.24 µm	measurement of CO ₂ -flame gases
	F2H	400 to 1650 °C		
F6	F6	200 to 1450 °C	4.64 µm	measurement of CO-flame gases
	F6H	400 to 1650 °C		
G5	G5L	100 to 1200 °C	5.0 µm	measurement of glass
	G5H	250 to 1650 °C		
	G5HF	200 to 1450 °C		
	G5H1F	400 to 1650 °C		
G7	G7	100 to 1200 °C	7.9 µm	measurement of glass
P7	P7	0 to 710 °C	7.9 µm	plastic foils and surfaces of glass

Table 1: Overview of models

In the following chapters of this manual, only the abbreviated model codes are used. For the 1M, 2M, 3M, 4M, and G5 models, the overall measurement range is divided into several subranges (e.g., L, H, H1, etc.).

2 Technical Data

2.1 Factory settings

Setting	Value
Signal output object temperature	0 – 5 V
Lower/upper limit signal output	0 – 5 V
Emissivity	0.970 [LT/ LTF/ MT/ F2/ F6/ G5/ G7/ P7] 1.000 [05M/ 1M/ 2M/ 3M/ 4M]
Transmissivity	1.000
Average time (AVG)	0.2 s [LT]; 0.1 s [LTF/ MT/ F2/ F6/ G5/ G7/ P7] 0.001 s [05M/ 1M/ 2M/ 3M/ 4M]
Smart Averaging	Inactive (active [LTF])
Peak hold	Inactive
Valley hold	Inactive
Temperature unit	°C
Ambient temperature compensation (on LT, LTF, MT, F2, F6, G5, G7, P7 output at OUT-AMB as 0-5 V signal)	internal head temperature probe
Baud rate	115 kBaud 921.6 kBaud (4M)
Laser	inactive

	LT/ LTF	05M	1ML	1MH	1MH1	2ML	2MH	2MH1
Lower limit temperature range [°C]	0	1000	485	650	800	250	385	490
Upper limit temperature range [°C]	500	2000	1050	1800	2200	800	1600	2000
Lower alarm limit [°C] (Normally closed)	30	1200	600	800	1200	350	500	800
Upper alarm limit [°C] (Normally open)	100	1600	900	1400	1600	600	1200	1400

	3ML	3MH	3MH1	3MH2	3MH3	4ML	MT	MTH	4ML
Lower limit temperature range [°C]	50	100	150	200	250	0	200	400	0
Upper limit temperature range [°C]	400	600	1000	1500	1800	500	1450	1650	500
Lower alarm limit [°C] (Normally closed)	100	250	350	550	750	30	400	600	30
Upper alarm limit [°C] (Normally open)	300	500	600	1000	1200	100	1200	1400	100

	F2	F2H	F6	F6H	G5L	G5H	G5HF	G7	P7
Lower limit temperature range [°C]	200	400	200	400	100	250	200	100	0
Upper limit temperature range [°C]	1450	1650	1450	1650	1200	400	600	1200	710
Lower alarm limit [°C] (Normally closed)	400	600	400	600	200	350	350	200	30
Upper alarm limit [°C] (Normally open)	1200	1400	1200	1400	500	900	900	500	100

2.2 General specifications

	Sensing head	Electronic box
Environmental rating	IP65 (NEMA-4)	
Ambient temperature ¹⁾	-20...85 °C (4ML: -20...70 °C)	
Storage temperature	-40...85 °C (3M: -40...125 °C)	-40...85 °C
Relative humidity	10...95 %, noncondensing	
Material	Stainless steel	Die casting zinc
Dimensions	100 mm x 50 mm, M48x1.5	89 mm x 70 mm x 30 mm
Weight	600 g	420 g
Cable length	3 m (standard), 8 m, 15 m	
Cable diameter	5 mm	
Ambient temperature cable	Max. 105 °C [High temperature cable (optional): 180 °C]	
Vibration	IEC 60068-2-6 (sinus shaped), IEC 60068-2-64 (broad band noise)	
Shock	IEC 60068-2-27 (25G and 50G)	
Software (optional)	Compact Connect or CompactPlus Connect (4M only) / IRmobile App	

¹⁾ Laser will turn off automatically at ambient temperatures >50 °C. The functionality of the LCD display can be limited at ambient temperatures below 0 °C.

2.3 Electrical specifications

Specification	Values
Power supply	8–36 VDC (4M: 8-30 VDC / 5 V USB / max. 1,2 W)
Current draw	Max. 160 mA
Aiming laser	635 nm, 1 mW, On/ Off via programming keys or software
Outputs/ analog	(For 4M output 1 and 2 are freely selectable: Analog mA/mV, Alarm mA/mV, TCK)
Channel 1	selectable: 0/ 4–20 mA, 0–5/ 10 V, thermocouple (J or K) or alarm output (Signal source: object temperature)
Channel 2 (LT/ LTF/ MT/ F2/ F6/ G5/ G7/ P7 only)	Head temperature [-20...180 °C] as 0–5 V or 0–10 V output or alarm output (Signal source switchable to object temperature or electronic box temperature if used as alarm output)
Alarm output	Open collector (NPN type) output at Pin AL2 [24 V/ 50 mA]
Output impedances	
mA	Max. loop resistance 500 Ω
mV	Min. 100 kΩ load impedance
Digital interfaces	USB, RS232, RS485, Profibus DP, Modbus RTU, Ethernet (optional plug-in modules)
Relay outputs	2 x 60 VDC/ 42 VAC _{RMS} , 0.4 A; optically isolated (optional plug-in module)
Functional inputs	F1-F3; software programmable for the following functions: <ul style="list-style-type: none"> - external emissivity adjustment - ambient temperature compensation - trigger (reset of hold functions) 4M: I/O1-3 pins freely selectable via software

2.4 Measurement specifications

2.4.1 LT / LTfast version

	LT	LTfast
Temperature range (scalable)	-50...975 °C	
Spectral range	8...14 µm	
Optical resolution	75:1	50:1
System accuracy ¹⁾²⁾³⁾	±1 °C or ± 1 %	±1.5 °C or ± 1.5 %
Repeatability ¹⁾³⁾	±0.5 °C or ± 0.5 %	±1 °C or ± 1 %
Temperature coefficient ⁴⁾	±0.05 K/ K or ±0.05 %/ K	
NETD ³⁾⁵⁾	0.1 K	0.5 K
Response time (90 % signal)	120 ms	9 ms
Warm-up time	10 min	
Emissivity/ Gain, Transmissivity	0.100...1.100 (adjustable via programming keys or software)	
Signal processing	Average, peak hold, valley hold (adjustable via programming keys or software)	

¹⁾ at ambient temp. 23 ±5 °C; at object temperatures >0 °C (LT) / ≥ 20 °C (LTF); response time=1 s

²⁾ Accuracy for thermocouple output: ±2.5 °C or ±1 %, whichever is greater

³⁾ ε =1

⁴⁾ for ambient temperatures (head) <18 °C and >28 °C; whichever is greater

⁵⁾ at time constant of 200 ms (LT) / 100 ms (LTF) and an object temperature of 25 °C

2.4.2 05M / 1M versions

	05M	1ML	1MH	1MH1
Temperature range (scalable)	1000...2000 °C	485...1050 °C	650...1800 °C	800...2200 °C
Spectral range	0.525 µm	1.0 µm		
Optical resolution	150:1	150:1	300:1	
System accuracy ^{1) 2) 3)}	± 1 % T _{Meas} (≤ 1100 °C) ± (0.3 % T _{Meas} + 2 °C) (> 1100 °C)	± (0.3 % T _{Meas} + 2 °C)		
Repeatability ^{1) 3)}	± 0.5 % T _{Meas} (≤ 1100 °C) ± (0.1 % T _{Meas} + 1 °C) (> 1100 °C)	± (0.1 % T _{Meas} + 1 °C)		
Temperature coefficient ⁴⁾	±0.05 K/ K or ± 0.05 %/ K	± 0.05 K/ K or ± 0.05 %/ K		
NETD ^{3) 5)}	0.2 K	0.1 K		
Response time (90 % signal) ⁶⁾	1 ms			
Warm-up time	None			
Emissivity/ Gain/ Transmissivity	0.100...1.000 (adjustable via programming keys or software)			
Signal processing	Average, peak hold, valley hold (adjustable via programming keys or software)			

¹⁾ at ambient temp. 23 ±5 °C; whichever is greater; response time=1 s

²⁾ Accuracy for thermocouple output: ±2.5 °C or ±1 %, whichever is greater

³⁾ ε =1

⁴⁾ for ambient temperatures (head) <18 °C and >28 °C; whichever is greater

⁵⁾ at time constant 1 ms and object temperature=start of measurement range + 50 °C

⁶⁾ with dynamic adaptation at low signal levels

2.4.3 2M models

	2ML	2MH	2MH1
Temperature range (scalable)	250...800 °C	385...1600 °C	490...2000 °C
Spectral range	1.6 µm		
Optical resolution	150:1	300:1	
System accuracy ¹⁾²⁾³⁾	± (0.3 % T _{Meas} +2 °C)		
Repeatability ¹⁾³⁾	± (0.1 % T _{Meas} +1 °C)		
Temperature coefficient ⁴⁾	± 0.05 K/ K or ± 0.05 %/ K		
NETD ³⁾⁵⁾	0.1 K		
Response time (90 % signal) ⁶⁾	1 ms		
Warm-up time	None		
Emissivity/ Gain/ Transmissivity	0.100...1.000 (adjustable via programming keys or software)		
Signal processing	Average, peak hold, valley hold (adjustable via programming keys or software)		

¹⁾ at ambient temp. 23 ± 5 °C; whichever is greater; response time = 1 s

²⁾ Accuracy for thermocouple output: ± 2.5 °C or ± 1 %, whichever is greater

³⁾ ε =1

⁴⁾ for ambient temperatures (head) < 18 °C and > 28 °C; whichever is greater

⁵⁾ at time constant 1 ms and object temperature=start of measurement range + 50 °C

⁶⁾ with dynamic adaptation at low signal levels

2.4.4 3M models

	3ML ¹⁾	3MH ¹⁾	3MH1 ²⁾	3MH2 ²⁾	3MH3 ²⁾
Temperature range (scalable)	50...400 °C	100...600 °C	150...1000 °C	200...1500 °C	250...1800 °C
Spectral range	2.3 µm				
Optical resolution	60:1	100:1	300:1		
System accuracy ^{3) 4) 5)}	± (0.3 % T _{Meas} + 2 °C)				
Repeatability ^{3) 5)}	± (0.1 % T _{Meas} + 1 °C)				
Temperature coefficient ⁶⁾	± 0.05 K/ K or ± 0.05 %/ K				
NETD ^{5) 7)}	0.1 K				
Response time (90 % signal) ⁸⁾	1 ms				
Warm-up time	None				
Emissivity/ Gain/ Transmissivity	0.100...1.100 (adjustable via programming keys or software)				
Signal processing	Average, peak hold, valley hold (adjustable via programming keys or software)				

¹⁾ T_{Object} > T_{Head} + 25 °C

²⁾ Specification valid at T_{Object} ≥ start of measurement range + 50 °C

³⁾ at ambient temp. 23 ± 5 °C; whichever is greater; response time = 1 s

⁴⁾ Accuracy for thermocouple output: ± 2.5 °C or ± 1 %, whichever is greater

⁵⁾ ε = 1 ⁶⁾ for ambient temperatures (head) < 18 °C and > 28 °C; whichever is greater

⁷⁾ at time constant 1 ms and object temperature = start of measurement range + 50 °C

⁸⁾ with dynamic adaptation at low signal levels

2.4.5 4M / MT / MTH models

	4ML	MT	MTH
Temperature range (scalable)	0...500 °C	200...1450 °C	400...1650 °C
Spectral range	2.2-6 μm	3.9 μm	
Optical resolution	33:1	45:1	
System accuracy ¹⁾²⁾	± (0.3 % T _{Meas} + 2 °C)	± 1 % ³⁾	
Repeatability ¹⁾	± (0.1 % T _{Meas} + 1 °C)	± 0.5 % or 0.5 °C ³⁾	
Temperature coefficient ⁴⁾	± 0.05 K/ K or ± 0.03 %/ K ⁵⁾	± 0.05 K/ K or ± 0.05 %/ K	
NETD ⁶⁾	180 mK	100 mK	
Response time (90 % signal)	300 μs (Exposure time: 90 μs)	10 ms	
Warm-up time	None		
Transmissivity	0.100...1.100 (adjustable via programming keys or software)		
Signal processing	Average, peak hold, valley hold (adjustable via programming keys or software)		

¹⁾ at ambient temp. 23 ± 5 °C; whichever is greater; response time = 1 s

²⁾ Accuracy for thermocouple output: ±2.5 °C or ± 1 %

³⁾ MT: at object temperatures > 300 °C with dynamic adaptation at low signal levels

⁴⁾ for ambient temperatures (head) < 18 °C and > 28 °C; whichever is greater

⁵⁾ for ambient temperatures > 10 °C; whichever is greater

⁶⁾ ε = 1

⁷⁾ at time constant 1 ms and T_{Obj} = 50 °C

2.4.6 F2/ F6/ P7 models

	F2	F2H	F6	F6H	P7
Temperature range (scalable)	200...1450 °C	400...1650 °C	200...1450 °C	400...1650 °C	0...710 °C
Spectral range	4.24 µm		4.64 µm		7.9 µm
Optical resolution	45:1				
System accuracy ^{1), 2)}	±1 % ³⁾				± 1.5 °C or ± 1 %
Repeatability ¹⁾	± 0.5 °C or ± 0.5 % ²⁾				
Temperature coefficient ⁴⁾	± 0.05 K/ K or ± 0.05 %/ K				
NETD ⁵⁾	0.1 K				0.5 K
Response time (90 % signal)	10 ms				150 ms
Warm-up time	None				
Emissivity/ Gain/ Transmissivity	0.100...1.000 (adjustable via programming keys or software)				
Signal processing	Average, peak hold, valley hold (adjustable via programming keys or software)				

¹⁾ at ambient temp. 23 ± 5 °C; whichever is greater; response time = 1 s

²⁾ Accuracy for thermocouple output: ± 2.5 °C or ± 1 %

³⁾ at object temperatures > 300 °C (F2/F6)

⁴⁾ for ambient temperatures (head) < 18 °C and > 28 °C; whichever is greater

⁵⁾ $\varepsilon = 1$; at time constant 200 ms and object temperature = start of measurement range + 50 °C

2.4.7 G5/ G7 models

	G5L	G5H	G5HF	G5H1F	G7
Temperature range (scalable)	100...1200 °C	250...1650 °C	200...1450 °C	400...1650 °C	100...1200 °C
Spectral range	5.0 µm				7.9 µm
Optical resolution	45:1	70:1	45:1		
System accuracy ¹⁾²⁾	± 1.5 °C or ± 1 %				
Repeatability ¹⁾	± 0.05 K/ K or ± 0.05 %/ K				
Temperature coefficient ⁴⁾	± 0.5 °C or ± 0.5 %				
NETD ⁶⁾	0.1 K				0.5 K
Response time (90 % signal)	120 ms	80 ms	10 ms		150 ms
Warm-up time	None				
Emissivity/ Gain/ Transmissivity	0.100...1.100 (adjustable via programming keys or software)				
Signal processing	Average, peak hold, valley hold (adjustable via programming keys or software)				

¹⁾ at ambient temp. 23 ±5 °C; whichever is greater; response time = 1 s

²⁾ Accuracy for thermocouple output: ±2.5 °C or ±1 %

³⁾ ε = 1

⁴⁾ for ambient temperatures (head) <18 °C and >28 °C; whichever is greater

⁵⁾ at time constant 200 ms and object temperature = start of measurement range + 50 °C

2.5 Optical charts

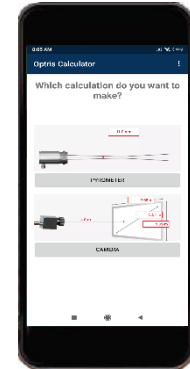
The following optical charts show the diameter of the measuring spot in dependence on the distance between measuring object and sensing head. The spot size refers to **90 % of the radiation energy**. The distance is always measured from the front edge of the sensing head.

As an alternative to the optical diagrams, the [spot size calculator](#) available on the Optris website or the Optris Calculator App can be used. The app is available for free download from the Google Play Store (see QR code).



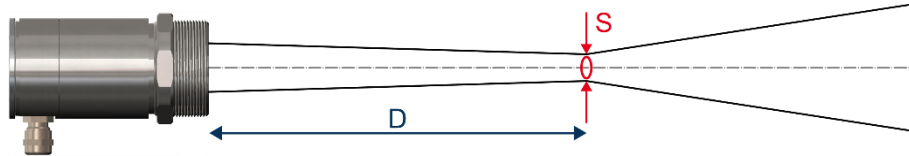
D = Distance from front of the sensing head to the object

S = Spot size



The size of the measuring object and the optical resolution of the infrared thermometer determine the maximum distance between sensing head and measuring object. To prevent measuring errors the object should fill out the field of view of the optics completely. Consequently, the spot should at all times have at least **the same size** as the object or be **smaller**.

2.5.1 Standard Focus (SF)

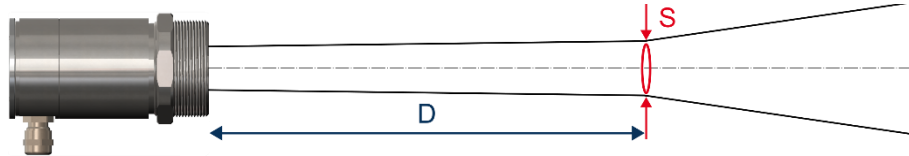


Device	D:S	Optical values													
		0	100	200	300	400	500	600	700	800	900	1000	1100	1200	Distance (mm)
4ML	30	6.5	9.2	12.0	14.7	17.5	20.2	23.0	25.7	28.4	31.2	33.9	36.7	40.6	Spotsize (mm)
*)	45	6.5	8.2	9.9	11.5	13.2	14.9	16.6	18.3	19.9	21.6	23.3	25.0	27.0	Spotsize (mm)
LTF	50	6.5	8.0	9.4	10.9	12.3	13.8	15.3	16.7	18.2	19.6	21.1	22.5	24.0	Spotsize (mm)
3ML	60	6.5	7.6	8.7	9.7	10.8	11.9	13.0	14.0	15.1	16.2	17.3	18.3	20.6	Spotsize (mm)
G5H	70	6.5	7.4	8.3	9.2	10.0	10.9	11.8	12.7	13.6	14.5	15.4	16.3	17.1	Spotsize (mm)
LT	75	6.5	7.3	8.1	8.9	9.7	10.5	11.3	12.0	12.8	13.6	14.4	15.2	16.0	Spotsize (mm)
3MH	100	6.5	6.9	7.3	7.7	8.1	8.5	9.0	9.4	9.8	10.2	10.6	11.0	12.6	Spotsize (mm)
05/1/2ML	150	6.5	6.6	6.7	6.7	6.8	6.9	7.0	7.0	7.1	7.2	7.3	7.3	8.6	Spotsize (mm)
**)	300	6.5	6.2	6.0	5.7	5.5	5.2	5.0	4.7	4.4	4.2	3.9	3.7	4.6	Spotsize (mm)

*) G5ML, G7, P7, G5HF, G5H1, F6, F6H, F2, F2H, MT, MTH

**) 1MH, 1MH1, 2MH, 2MH1, 3MH1, 3MH2, 3MH3

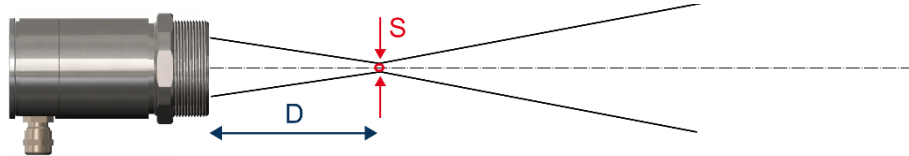
2.5.2 Far Field (FF)



Device	D:S	Optical values												
		0	400	800	1200	1600	2000	2400	2800	3200	3600	4000	4400	Distance (mm)
4ML	30	6.5	19.1	31.7	44.3	56.9	69.6	82.2	94.8	107.4	120.0	134.1	148.1	Spotsize (mm)
3ML	60	6.5	12.4	18.4	24.3	30.3	36.2	42.2	48.1	54.1	60.0	67.4	74.8	Spotsize (mm)
3MH	100	6.5	9.8	13.1	16.3	19.6	22.9	26.2	29.4	32.7	36.0	40.7	45.4	Spotsize (mm)
05ML/1ML/2ML	150	6.5	8.4	10.4	12.3	14.3	16.2	18.2	20.1	22.1	24.0	27.4	30.8	Spotsize (mm)
*)	300	6.5	7.1	7.7	8.3	8.9	9.6	10.2	10.8	11.4	12.0	14.1	16.1	Spotsize (mm)

*) 1MH, 1MH1, 2MH, 2MH1, 3MH1, 3MH2, 3MH3

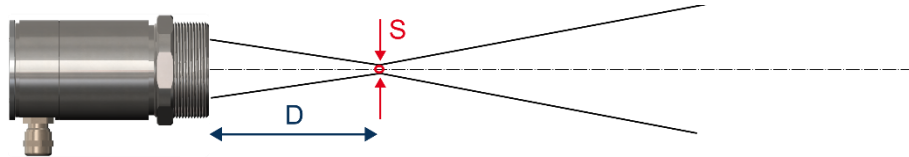
2.5.3 Close Focus (CF1)



Device	D:S	Optical values												
		0	10	20	30	40	50	60	70	80	85	90	100	Distance (mm)
4ML	30	6.5	5.9	5.3	4.7	4.1	3.5	2.9	2.3	3.6	4.2	4.9	6.1	Spotsize (mm)
*)	45	6.5	5.8	5.1	4.4	3.7	3.0	2.3	1.6	2.7	3.3	3.9	5.0	Spotsize (mm)
LTF	50	6.5	5.8	5.0	4.3	3.6	2.9	2.1	1.4	2.5	3.1	3.7	4.8	Spotsize (mm)
3ML	60	6.5	5.9	5.3	4.7	4.1	3.5	2.9	2.3	1.7	1.4	1.9	2.8	Spotsize (mm)
G5H	70	6.5	5.7	4.9	4.1	3.4	2.6	1.8	1.0	2.1	2.6	3.1	4.2	Spotsize (mm)
LT	75	6.5	5.7	4.9	4.1	3.3	2.5	1.7	0.9	2.0	2.5	3.1	4.1	Spotsize (mm)
3MH	100	6.5	5.8	5.2	4.5	3.8	3.2	2.5	1.8	1.2	0.9	1.3	2.1	Spotsize (mm)
3MH1,H2,H3	300	6.5	5.8	5.0	4.3	3.6	2.8	2.1	1.4	0.6	0.3	0.7	1.5	Spotsize (mm)

*) G5ML, G7, P7, G5HF, G5H1, F6H, F6, F2H, F2, MT, MTH

2.5.4 Close Focus (CF2)

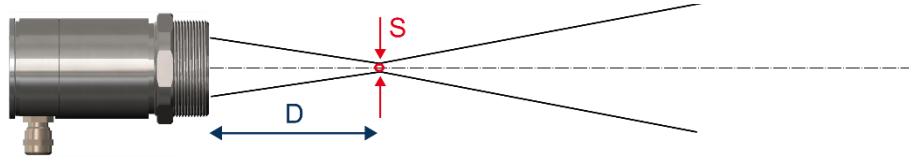


Device	D:S	Optical values											
		0	25	50	75	100	125	150	175	200	225	250	Distance (mm)
4ML	30	6.5	6.3	6.0	5.8	5.5	5.3	5.0	6.9	8.8	10.8	12.7	Spotsize (mm)
*)	45	6.5	6.0	5.4	4.9	4.4	3.9	3.3	5.0	6.6	8.3	9.9	Spotsize (mm)
LTF	50	6.5	5.9	5.3	4.8	4.2	3.6	3.0	4.6	6.2	7.8	9.3	Spotsize (mm)
3ML	60	6.5	5.8	5.2	4.5	3.8	3.2	2.5	4.0	5.5	7.0	8.5	Spotsize (mm)
G5H	70	6.5	5.8	5.0	4.3	3.6	2.9	2.1	3.6	5.0	6.5	7.9	Spotsize (mm)
LT	75	6.5	5.8	5.0	4.3	3.5	2.8	2.0	3.4	4.8	6.3	7.7	Spotsize (mm)
3MH	100	6.5	5.7	4.8	4.0	3.2	2.3	1.5	2.8	4.2	5.5	6.8	Spotsize (mm)
05/1/2ML	150	6.5	5.6	4.7	3.8	2.8	1.9	1.0	2.3	3.5	4.8	6.0	Spotsize (mm)
**)	300	6.5	5.5	4.5	3.5	2.5	1.5	0.5	1.7	2.8	4.0	5.2	Spotsize (mm)

*) G5ML, G7, P7, G5HF, G5H1, F6H, F6, F2H, F2, MT, MTH

***) 1MH, 1MH1, 2MH, 2MH1, 3MH1, 3MH2, 3MH3

2.5.5 Close Focus (CF3)

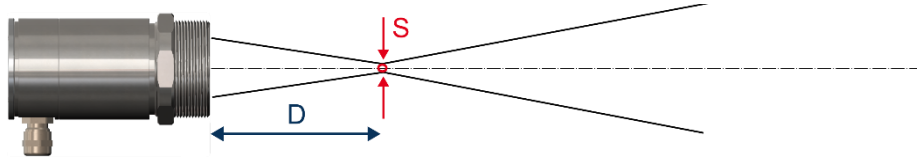


Device	D:S	Optical values												
		0	25	50	75	100	125	150	175	200	225	250	Distance (mm)	
4ML	30	6.5	6.5	6.5	6.6	6.6	6.6	6.6	6.6	6.6	6.7	8.3	10.0	Spotsize (mm)
*)	45	6.5	6.2	6.0	5.7	5.5	5.2	5.0	4.7	4.4	5.8	7.2	Spotsize (mm)	
LTF	50	6.5	6.2	5.9	5.6	5.3	4.9	4.6	4.3	4.0	5.3	6.6	Spotsize (mm)	
3ML	60	6.5	6.1	5.7	5.3	4.9	4.5	4.1	3.7	3.3	4.6	5.8	Spotsize (mm)	
G5H	70	6.5	6.0	5.6	5.1	4.7	4.2	3.8	3.3	2.9	4.0	5.2	Spotsize (mm)	
LT	75	6.5	6.0	5.5	5.1	4.6	4.1	3.6	3.1	2.7	3.8	5.0	Spotsize (mm)	
3MH	100	6.5	5.9	5.4	4.8	4.3	3.7	3.1	2.6	2.0	3.1	4.1	Spotsize (mm)	
05/1/2ML	150	6.5	5.9	5.2	4.6	3.9	3.3	2.6	2.0	1.3	2.3	3.3	Spotsize (mm)	
**)	300	6.5	5.8	5.0	4.3	3.6	2.9	2.1	1.4	0.7	1.6	2.5	Spotsize (mm)	

*) G5ML, G7, P7, G5HF, G5H1, F6H, F6, F2H, F2, MT, MTH

***) 1MH, 1MH1, 2MH, 2MH1, 3MH1, 3MH2, 3MH3

2.5.6 Close Focus (CF4)



Device	D:S	Optical values											
		0	50	100	150	200	250	300	350	400	450	500	Distance (mm)
4ML	30	6.5	7.4	8.4	9.3	10.3	11.2	12.2	13.1	14.1	15.0	17.4	Spotsize (mm)
*)	45	6.5	6.9	7.3	7.7	8.1	8.4	8.8	9.2	9.6	10.0	11.8	Spotsize (mm)
LTF	50	6.5	6.8	7.1	7.3	7.6	7.9	8.2	8.4	8.7	9.0	10.7	Spotsize (mm)
3ML	60	6.5	6.6	6.7	6.8	6.9	7.1	7.2	7.3	7.4	7.5	9.1	Spotsize (mm)
G5H	70	6.5	6.5	6.5	6.5	6.5	6.5	6.5	6.4	6.4	6.4	7.9	Spotsize (mm)
LT	75	6.5	6.4	6.4	6.3	6.3	6.2	6.2	6.1	6.1	6.0	7.4	Spotsize (mm)
3MH	100	6.5	6.3	6.1	5.8	5.6	5.4	5.2	4.9	4.7	4.5	5.7	Spotsize (mm)
05/1/2ML	150	6.5	6.1	5.7	5.3	4.9	4.6	4.2	3.8	3.4	3.0	4.1	Spotsize (mm)
**))	300	6.5	5.9	5.4	4.8	4.3	3.7	3.2	2.6	2.1	1.5	2.4	Spotsize (mm)

3 Mechanical Installation



- Keep the optical path free of any obstacles.
- For an exact alignment of the head to the object activate the integrated double laser.
[▶ 5.2 Aiming laser]

3.1 Dimensions

The CTlaser is equipped with a metric M48x1.5 thread and can be installed either directly via the sensor thread or with help of the supplied mounting nut (standard) and fixed mounting bracket (standard) to a mounting device available.

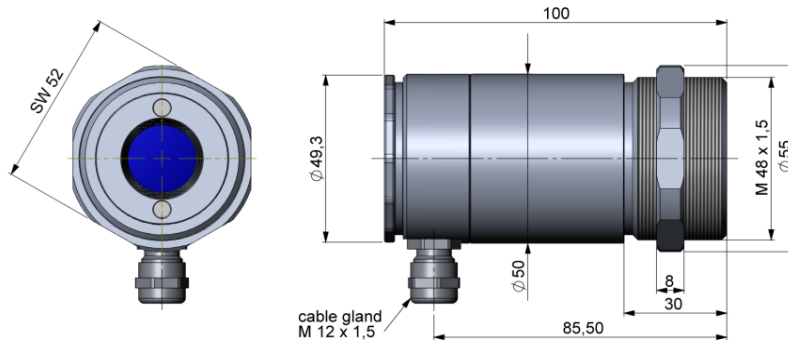


Figure 1: CTlaser sensing head

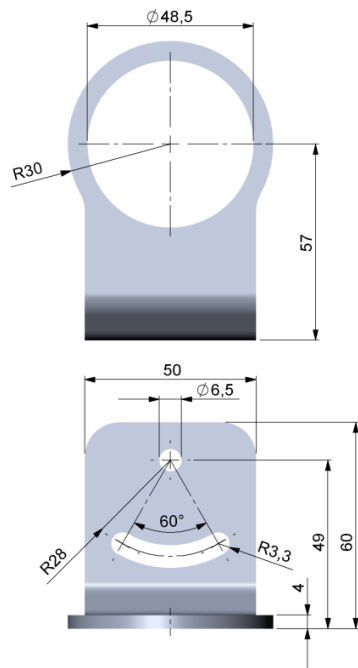


Figure 2: Mounting bracket, adjustable in one axis [Order No. - ACCTLFB] – standard scope of supply

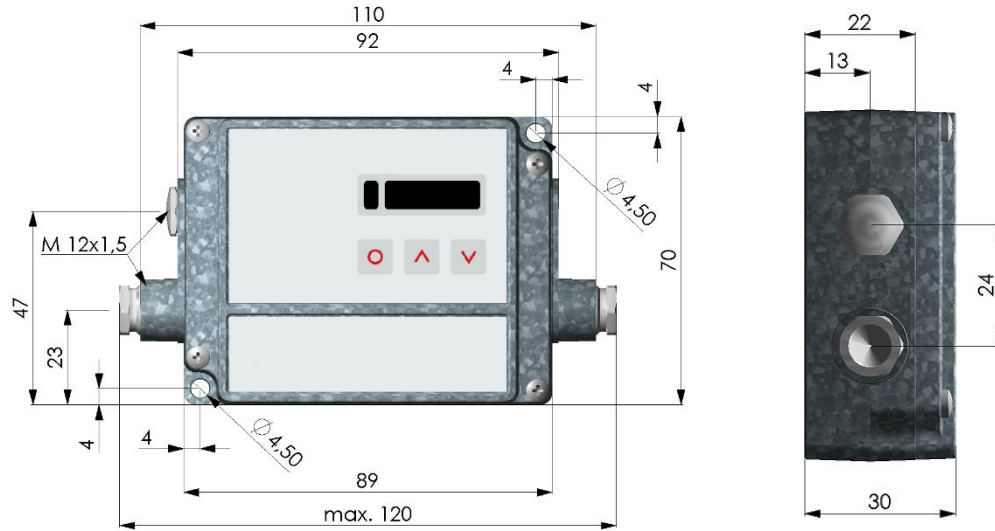


Figure 3: Electronic box

3.2 Accessories

3.2.1 Air purge collar



- Use oil-free, technically clean air only.
- The needed amount of air (approx. 40...120 l/ min.) and pressure (approx. 1.1...8 bar) depends on the application and the installation conditions on-site.

The lens must be kept clean at all times from dust, smoke, fumes and other contaminants to avoid reading errors. These effects can be reduced by using an air purge collar.

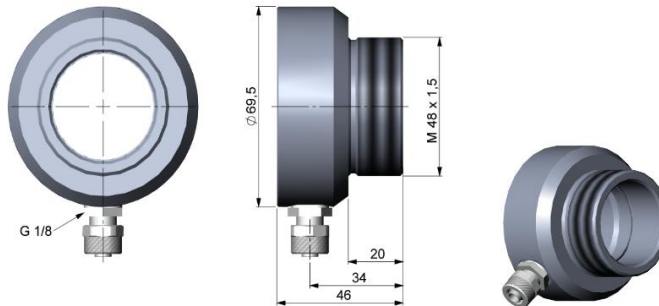


Figure 4: Air purge collar [Order No.: ACCTLAP], hose connection: 6x8 mm, thread (fitting): G 1/8 inch

3.2.2 Mounting bracket

This adjustable mounting bracket allows an adjustment of the sensor head in two axes.

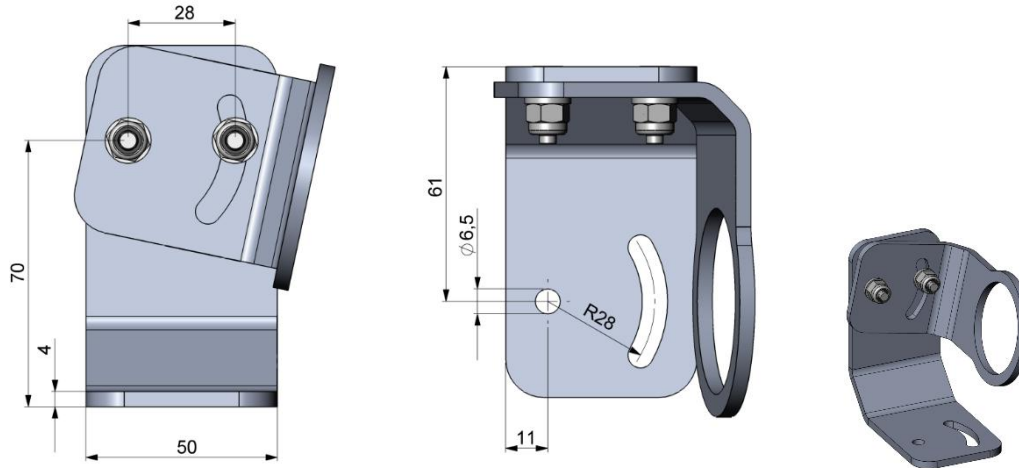


Figure 5: Mounting bracket, adjustable in two axes [Order No.: ACCTLAB]

3.2.3 Water cooled housing



To avoid condensation on the optics an air purge collar is recommended.

The sensing head is designed for operation at ambient temperatures up to 85 °C. For applications exceeding this temperature range, the use of the optional water-cooled housing (permitting operation at ambient temperatures up to 175 °C) and the optional high-temperature cable (rated for temperatures up to 180 °C) is recommended.

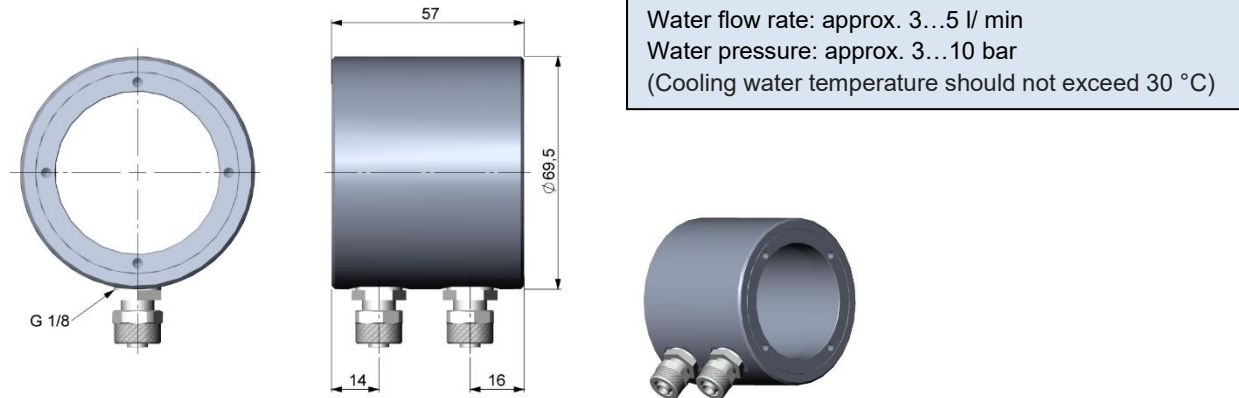


Figure 6: Water cooled housing [Order No.: ACCTLW], hose connection: 6x8 mm, thread (fitting): G 1/8 inch

3.2.4 Rail mount adapter for electronic box

With the rail mount adapter the CTlaser electronics can be mounted easily on a DIN rail (TS35) according EN50022.

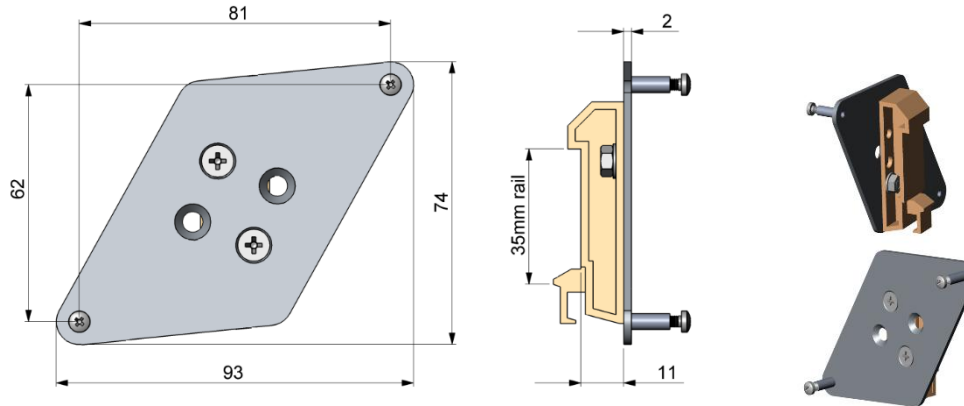


Figure 7: Rail mount adapter [Order No.: ACCTRAIL]

3.2.5 CoolingJacket Advanced

For very high ambient temperatures (up to 250 °C) the **CoolingJacket Advanced** (cooling housing) is provided.

Order No.: ACCXLCJA



For detailed information, refer to the product manual available on our website:

<https://optris.com/products/cooling-jacket-advanced>

3.2.6 Outdoor protective housing

The CTlaser LT models and the USB server can also be used for outdoor applications by using the outdoor protective housing (**Order No.: ACCTLOPH24ZNS, ACCTLOPH24B1M**).

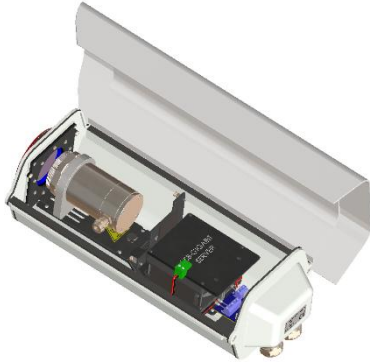


Figure 8: Outdoor protective housing for CTlaser LT/1M with integrated heater, incl. protective window (ZnS), air purge collar and 24 V_{DC} power line



Figure 9: Outdoor protective housing with wall mount



For detailed information visit our website:

<https://optris.com/products/outdoor-protective-housing>

3.2.7 USB kit

The USB kit is used to connect the sensor to a smartphone or tablet (► **6 IRmobile app**). Please find more information about this product [here](#). The cable connector can be used for the connection to your PC in combination with the analysis and visualization software available on our website

- All models (except 4M): <https://optris.com/software/compact-connect/>
- Only 4M model: <https://optris.com/software/compactplus-connect/>



Figure 10: USB-kit [Order No.: **ACCTIAC** (for CTlaser 4M: **ACCTMIAC**)]

4 Electrical Installation

4.1 Connection of the cables



- For the Coolingjacket the connector version is needed.
- Connector Kit: Subsequent conversion of a standard CTlaser sensor into the connector version (**Order No.: ACCTLCONK**).

4.1.1 Basic version

The basic version is supplied with a connection cable (connection sensing head-electronics). For the electrical installation of the CTlaser open at first the cover of the electronic box (4 screws). Below the display are the screw terminals for the cable connection.



Figure 11: Basic version

4.1.2 Connector version



Use the original ready-made, fitting connection cables which are optionally available. Consider the pin assignment of the connector (see **Figure 13**).

This version has a connector plug integrated in the sensor backplane



Figure 12: Connector version

4.2 Pin assignment

4.2.1 Connector plug (connector version only)

PIN	Designation	Wire color (original sensor cable)
1	Detector signal (+)	Yellow
2	Temperature probe head	Brown
3	Temperature probe head	White
4	Detector signal (-)	Green
5	Ground Laser (-)	Grey
6	Power supply Laser (+)	Pink
7	--	Not used

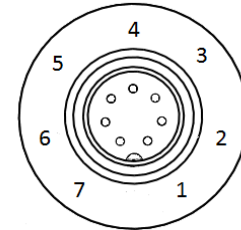


Figure 13: Connector plug
(exterior view)

4.2.2 Electronic board for LT/ LTF/ MT/ F2/ F6/ G5/ G7/ P7 models

+8...36 VDC	Power supply
GND	Ground (0 V) of power supply
GND	Ground (0 V) of internal in- and outputs
OUT-AMB	Analog output head temperature (mV)
OUT-TC	Analog output thermocouple (J or K)
OUT-mV/mA	Analog output object temperature (mV or mA)
F1-F3	Functional inputs
AL2	Alarm 2 (Open collector output)
3V SW	PINK/ Power supply Laser (+)
GND	GREY/ Ground Laser (-)
BROWN	Temperature probe head
WHITE	Temperature probe head
GREEN	Detector signal (-)
YELLOW	Detector signal (+)

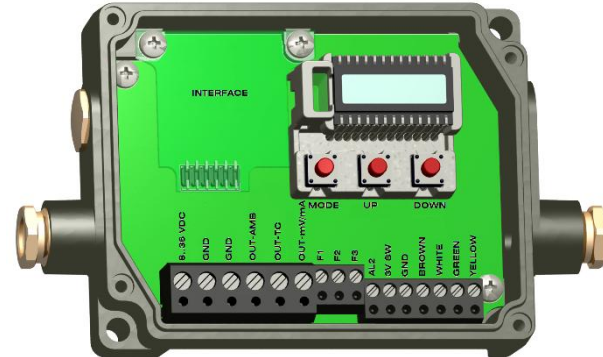


Figure 14: Opened electronic box (LT/ LTF/ MT/ F2/ F6/ G5/ G7/ P7) with terminal connections

4.2.3 Electronic board for 05M/ 1M/ 2M/ 3M models

+8...36 VDC	Power supply
GND	Ground (0 V) of power supply
GND	Ground (0 V) of internal in- and outputs
AL2	Alarm 2 (Open collector output)
OUT-TC	Analog output thermocouple (J or K)
OUT-mV/mA	Analog output object temperature (mV or mA)
F1-F3	Functional inputs
GND	Ground (0 V)
3V SW	PINK/ Power supply Laser (+)
GND	GREY/ Ground Laser (-)
BROWN	Temperature probe head
WHITE	Temperature probe head
GREEN	Detector signal (-)
YELLOW	Detector signal (+)

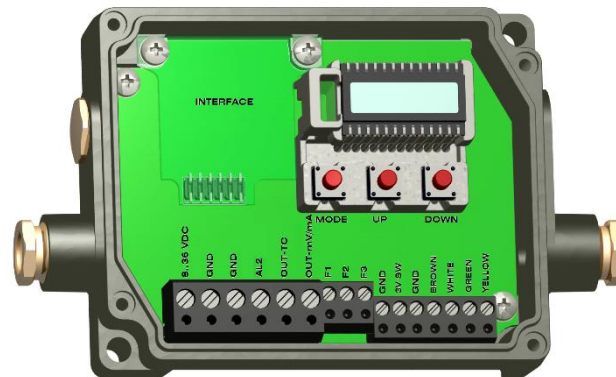


Figure 15: Opened electronic box (05M/ 1M/ 2M/ 3M) with terminal connections

4.2.4 Electronic board for 4M model

+8...30 VDC	Power supply
GND	Ground (0 V) of power supply
GND	Ground (0 V) of internal in- and outputs
AL2	Alarm 2 (Open collector output)
OUT-1	Analog output mA, mV, TCK
OUT-2	Analog output mA, mV, TCK
I/O1-I/O3	In- and outputs
GND	Ground (0 V)
Pink	3 VDC, switchable, for laser-sightingtool
Gray	Ground of PIN pink
BROWN	Temperature probe head (NTC)
WHITE	Head ground
GREEN	Head power
YELLOW	Detector signal

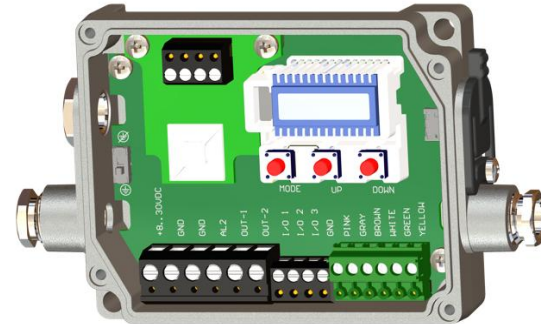


Figure 16: Opened electronic box (4M) with terminal connections

4.3 Power supply



Do never connect a supply voltage to the analog outputs as this will destroy the output! The CTlaser is not a 2-wire sensor!



Use a separate, stabilized power supply unit with an output voltage in the range of **8–36 VDC** (CTlaser 4M: **8–30 VDC**) which can supply **160 mA**. The residual ripple should be max. **200 mV**.

4.4 Cable assembling



For all power and data lines use shielded cables only. The sensor shield must be grounded.

The cable gland M12x1.5 allows the use of cables with a diameter of 3 to 5 mm.

1. Remove the isolation from the cable (40 mm power supply, 50 mm signal outputs, 60 mm functional inputs), cut the shield down to approximately 5 mm and spread the strands out.
2. Extract about 4 mm of the wire isolation and tin the wire ends. Place the pressing screw, the rubber washer and the metal washers of the cable gland one after the other onto the prepared cable end (see **Figure 17**).
3. Spread the strands and fix the shield between two of the metal washers.
4. Insert the cable into the cable gland until the limit stop and screw the cap tight. Every single wire may be connected to the according screw clamps according to their colors.

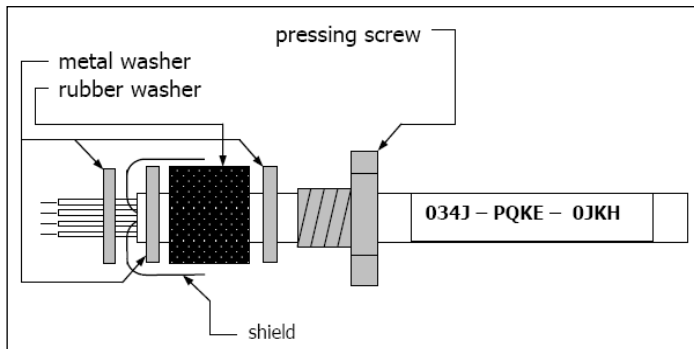


Figure 17: Cable assembling

4.5 Ground connection

4.5.1 05M, 1M, 2M, 3M models

At the bottom side of the mainboard PCB you will find a connector (jumper) which has been placed from factory side as shown in the picture [**bottom** and **middle** pin connected]. In this position the ground connections (GND power supply/ outputs) are connected with the ground of the electronics housing.

To avoid ground loops and related signal interferences in industrial environments it might be necessary to interrupt this connection. To do this put the jumper in the opposite position [**middle** and **top** pin connected].

If the thermocouple output is used the connection GND – housing should be interrupted generally.

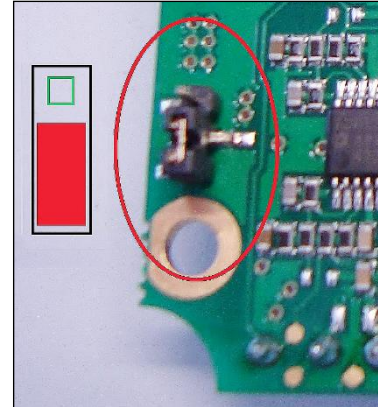


Figure 18: Ground connection

4.5.2 4M model

On the left side of the mainboard PCB you will find a black switch which is connecting factory-default the ground connections (GND power supply/ outputs) with the ground of the electronics housing.

To avoid ground loops and related signal interferences in industrial environments it might be necessary to interrupt this connection. For this purpose, the switch must be changed.



Figure 19:
Ground
connection

4.5.3 LT, LTF, MT, F2, F6, G5, G7, P7 models

At the bottom side of the mainboard PCB you will find a connector (jumper) which has been placed from factory side as shown in the picture [**left** and **middle** pin connected]. In this position the ground connections (GND power supply/ outputs) are connected with the ground of the electronics housing.

To avoid ground loops and related signal interferences in industrial environments it might be necessary to interrupt this connection. To do this put the jumper in the other position [**middle** and **right** pin connected].

If the thermocouple output is used the connection GND – housing should be interrupted generally.

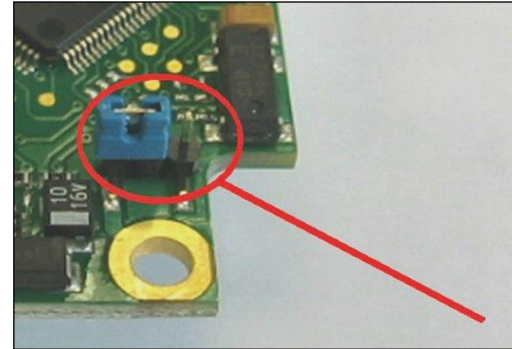


Figure 20: Ground connection

4.6 Exchange of the sensing head



- After exchanging a head the calibration code of the new head must be entered into the electronics.
 - After modification of the code a reset is necessary to activate the changes.
- [▶ 5 Operation]**
- The calibration code is fixed on a label on the head. Do not remove this label or note the code. The code is needed if the electronic must be exchanged.
 - The sensing head of the **CTlaser 4M** cannot be exchanged.

The sensing head is already connected to the electronics by factory default. Inside a certain model group an exchange of sensing heads and electronics is possible.

Entering of the calibration code

Every head has a specific calibration code, which is printed on the head. For a correct temperature measurement and functionality of the sensor this calibration code must be stored into the electronic box. The calibration code consists of five blocks with 4 characters each.

Example: **EKJ0 – 0OUD – 0A1B – A17U – 93OZ**

block 1 block 2 block 3 block 4 block 5

To enter the code press the **Up** and **Down** key (keep pressed) and then the **Mode** key. The display shows **HCODE** and then the 4 signs of the first block. With **Up** and **Down** each sign can be changed. **Mode** switches to the next sign or next block.



Figure 21: Sensing head

4.7 Exchange of the head cable



To avoid influences on the accuracy use an exchange cable with the same wire profiles and specification like the original one.

The sensing head cable can also be exchanged if necessary.

1. For a dismantling on the head side open the cover plate on the back side of the head first. Then remove the terminal block and loose the connections.
2. After the new cable has been installed proceed in reversed order. Be careful the cable shield is properly connected to the head housing.

4.8 Outputs and Inputs

4.8.1 Analog outputs

The CTlaser has two analog output channels. With the CTlaser 4M the outputs are freely selectable.



Consider that there are different connection pins on the mainboard (**OUT-mV/mA** or **OUT-TC**) according to the chosen output signal.

Output channel 1

This output is used for the object temperature. The selection of the output signal can be done via the programming keys [**► 5 Operation**]. The CompactConnect software allows the programming of output channel 1 as an alarm output.

Output signal	Range	Connection pin on CTlaser board
Voltage	0 ... 5 V	OUT-mV/mA
Voltage	0 ... 10 V	OUT-mV/mA
Current	0 ... 20 mA	OUT-mV/mA
Current	4 ... 20 mA	OUT-mV/mA
Thermocouple	TC J	OUT-TC
Thermocouple	TC K	OUT-TC

Output channel 2 [on LT/ G5/ G7/ P7 only]

The connection pin OUT AMB is used for output of the head temperature [-20–180 °C as 0–5 V or 0–10 V **signal**]. The CompactConnect software allows the programming of output channel 2 as an alarm output. Instead of the head temperature T_{Head} also the object temperature T_{Obj} or electronic box temperature T_{Box} can be selected as alarm source.

4.8.3 Relay outputs



- The switching thresholds are in accordance with the values for alarm 1 and 2 [► **4.8.6 Alarms**]. The alarm values are set according to the ► **0**
- . For advanced settings (change of low- and high alarm) a digital interface (USB, RS232) and the software is needed.
- A simultaneous installation of a digital interface and the relay outputs is not possible.

The CTIaser can optionally be equipped with a relay output. The relay board will be installed in the same way as the digital interfaces.

The relay board provides two fully isolated switches, which have the capability to switch max 60 VDC/ 42 VAC_{RMS}, 0.4 A, DC/AC. A red LED shows the closed switch.

4.8.4 Functional inputs (not for CTlaser 4M)

The three functional inputs F1 – F3 can be programmed with the CompactConnect software only.

Input	Description
F1 (digital):	trigger (a 0 V level on F1 resets the hold functions)
F2 (analog):	external emissivity adjustment [0–10 V: 0 V ► $\varepsilon = 0.1$; 9 V ► $\varepsilon = 1$; 10 V ► $\varepsilon = 1,1$]
F3 (analog):	external compensation of ambient temperature/ the range is scalable via software [0–10 V ► -40–900 °C/ pre-set range: -20–200 °C]
F1-F3 (digital):	emissivity (digital choice via table) A non-connected input represents: F1 = High F2, F3 = Low [High level: $\geq +3 \text{ V} \dots +36 \text{ V}$, Low level: $\leq +0,4 \text{ V} \dots -36 \text{ V}$]

4.8.5 I/O Pins (only for CTlaser 4M)

The CT 4M has three digital pins which can be programmed as outputs (digital) or as inputs (digital or analog) using the CompactPlus Connect software. The following functions are available:

Function	I/O pin	Description
Alarm	Output digital	Open collector output/ definition as High- or Low alarm via norm. open/ norm. close options in software dialog.
Valid Low	Input digital	The output follows the object temperature as long as there is a Low level at the I/O pin. After discontinuation of the Low level the last value will be held.
Valid High	Input digital	The output follows the object temperature as long as there is a High level at the I/O pin. After discontinuation of the High level the last value will be held.
Hold Low-High	Input digital	The last value will be held if there is a signal with a rising edge on the I/O pin.
Hold High-Low	Input digital	The last value will be held if there is a signal with a falling edge on the I/O pin.
Hold Reset Low	Input digital	Reset of Peak or valley hold (High-Low signal)
Hold Reset High	Input digital	Reset of Peak or valley hold (Low-High signal)

Emissivity external	Input analog	The emissivity value can be adjusted via a 0-10 V signal on the I/O pin (scaling possible via software).
Uncommitted value	Input analog	Display of a uncommitted value
Laser on Low	Input digital	Turning on the laser (Low signal)
Laser on High	Input digital	Turning on the laser (High signal)
External Ambient Compensation	Input analog	The ambient temperature will be determined by a voltage on the I/O-pin [0–10 V; range scalable].
External Transmitted Radiation	Input analog	The transmitted ambient temperature will be determined by a voltage on the I/O-pin [0–10 V; range scalable].
Low/High-level:	Via software	

4.8.6 Alarms



All alarms (alarm 1, alarm 2, output channel 1 and 2 if used as alarm output) have a fixed **hysteresis of 2 K**.

The CTlaser has the following Alarm features:

Output channel 1 and 2 [channel 2 on LT/ G5/ G7/ P7 only]

To activate, the according output channel has to be switched into digital mode. For this purpose the software CompactConnect is required.

Visual alarms

These alarms will cause a change of the color of the LCD display and will also change the status of the optional relays interface. In addition the Alarm 2 can be used as open collector output at pin **AL2** on the mainboard [**24 V/ 50 mA**].

The alarms are defined as follows by factory default, both alarms affect the color of the LCD display:

- **BLUE:** alarm 1 active
- **RED:** alarm 2 active
- **GREEN:** no alarm active

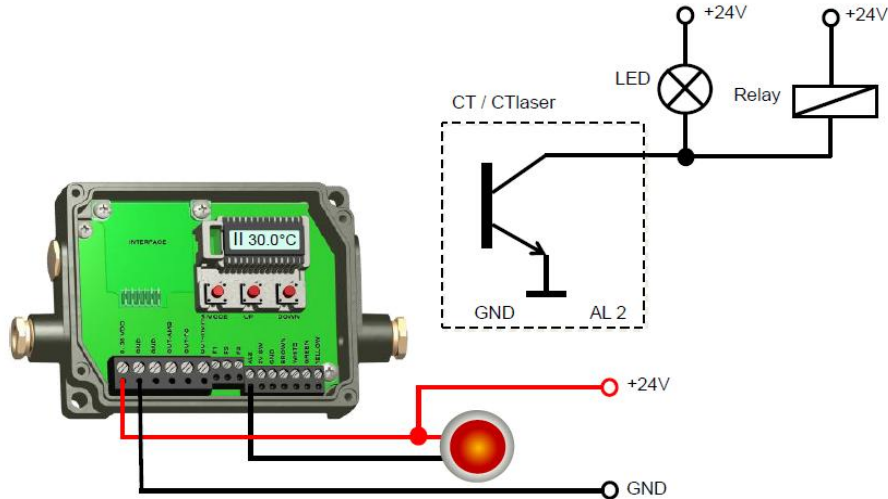
Alarm 1	Normally closed/ Low-Alarm
Alarm 2	Normally open/ High-Alarm

For extended setup like definition as low or high alarm [**via change of normally open/ closed**], selection of the signal source [**T_{Obj}, T_{Head}, T_{Box}**] a digital interface (e.g. USB, RS232) including the software CompactConnect is needed.



On the CTlaser model 4M both outputs are freely selectable. Analog mA/mV, Alarm mA/mV and TCK are available.

4.8.7 Open collector output / AL2



- The transistor acts as a switch. In case of alarm, the contact is closed.
- A load/consumer (Relay, LED or a resistor) must always be connected.
- The alarm voltage (here 24V) must not be connected directly to the alarm output (short circuit).

5 Operation

After power up the unit the sensor starts an initializing routine for some seconds. During this time the display will show **INIT**. After this procedure the object temperature is shown in the display. The display backlight color changes accordingly to the alarm settings [**▶ 4.8.6 Alarms**].

5.1 Sensor setup



- Pressing the Mode button again recalls the last called function on the display. The signal processing features **Peak hold** and **Valley hold** cannot be selected simultaneously.
- To set the CTlaser back to the factory default settings, press first the Down-key and then the Mode-key and keep both pressed for approx. 3 seconds. **RESET** appears as confirmation in the display.

The programming keys **Mode**, **Up** and **Down** enable the user to set the sensor on-site. The current measuring value or the chosen feature is displayed. With **Mode** the operator obtains the chosen feature, with **Up** and **Down** the functional parameters can be selected – **a change of parameters will have immediate effect**. If no key is pressed for more than 10 seconds the display automatically shows the calculated object temperature (according to the signal processing).

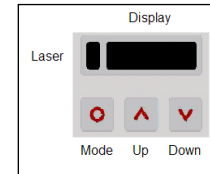


Figure 23: Display of the device

Display	Mode [Sample]	Adjustment Range
S ON	Laser Sighting [On]	ON/ OFF
142.3C	Object temperature (after signal processing) [142.3 °C]	fixed
127CH	Head temperature [127 °C]	fixed
25CB	Box temperature [25 °C]	fixed
142CA	Current object temperature [142 °C]	fixed
MV5	Signal output channel 1 [0-5 V]	0-20 = 0–20 mA/ 4-20 = 4–20 mA MV5 = 0–5 V/ MV10 = 0-10 V TCJ = thermocouple type J TCK = thermocouple type K
E0.970	Emissivity [0.970]	0.100 ... 1.100
T1.000	Transmissivity [1.000]	0.100 ... 1.100
A 0.2	Signal output Average [0.2 s]	A---- = inactive/ 0.1 ... 999.9 s
P----	Signal output Peak hold [inactive]	P---- = inactive/ 0.1 ... 999.9 s / P oo oo oo oo = infinite
V----	Signal output Valley hold [inactive]	V---- = inactive/ 0.1 ... 999.9 s / V oo oo oo oo = infinite
u 0.0	Lower limit temperature range [0 °C]	depending on model / inactive at TCJ- and TCK-output
n 500.0	Upper limit temperature range [500 °C]	depending on model / inactive at TCJ- and TCK-output
[0.00	Lower limit signal output [0 V]	according to the range of the selected output signal

] 5.00	Upper limit signal output [5 V]	according to the range of the selected output signal
U °C	Temperature unit [°C]	°C/ °F
 30.0	Lower alarm limit [30 °C]	depending on model
 100.0	Upper alarm limit [100 °C]	depending on model
XHEAD	Ambient temperature compensation [head temperature]	XHEAD = head temperature/ -40.0 ... 900.0 °C (for LT) as fixed value for compensation/ returning to XHEAD (head temperature) by pressing Up and Down together
M 01	Multidrop adress [1] (only with RS485 interface) RS422 mode	01 ... 32 RS422 (Press Down button on M01)
B 9.6	Baud rate in kBaud [9,6]	9.6/ 19.2/ 38.4/ 57.6/ 115.2 kBaud

Table 2: Sensor settings

Display	Description
S ON	Activating (ON) and Deactivating (OFF) of the Sighting Laser . By pressing Up or Down the laser can be switched on and off.
ø MV5	Selection of the Output signal . By pressing Up or Down the different output signals can be selected (see Table 2).
E0.970	Setup of Emissivity . Pressing Up increases the value, Down decreases the value (also valid for all further functions). The emissivity is a material constant factor to describe the ability of the body to emit infrared energy [► 9 Emissivity].
T1.000	Setup of Transmissivity . This function is used if an optical component (protective window, additional optics e.g.) is mounted between sensor and object. The standard setting is 1.000 = 100 % (if no protective window etc. is used).
A 0.2	Setup of Average time . In this mode an arithmetic algorithm will be performed to smoothen the signal. The set time is the time constant. This function can be combined with all other post processing functions. The shortest value is 0.001 s and can be increased/ decreased only by values of the power series of 2 (0.002, 0.004, 0.008, 0.016, 0.032, ...). If the value is set to 0.0 the display will show --- (function deactivated).
P----	<p>Setup of Peak hold. If the value is set to 0.0 the display will show --- (function deactivated). In this mode the sensor is waiting for descending signals. If the signal descends the algorithm maintains the previous signal peak for the specified time.</p> <p>After the hold time the signal will drop down to the second highest value or will descend by 1/8 of the difference between the previous peak and the minimum value during the hold time. This value</p>

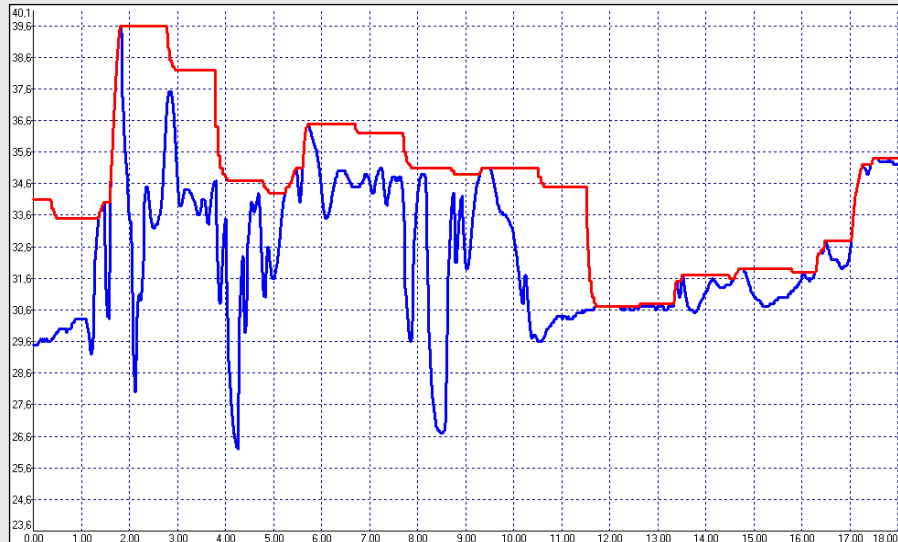
will be held again for the specified time. After this the signal will drop down with slow time constant and will follow the current object temperature.

V---

Setup of **Valley hold**. If the value is set to **0.0** the display will show --- (function deactivated). In this mode the sensor waits for ascending signals. The definition of the algorithm is according to the peak hold algorithm (inverted).

Description

Signal graph
with **P**



— TProcess with Peak Hold (Hold time = 1s)

— Actual without post processing

u 0.0	Setup of the Lower limit of temperature range . The minimum difference between lower and upper limit is 20 K . If you set the lower limit to a value \geq upper limit the upper limit will be adjusted to [lower limit + 20 K] automatically.
n 500.0	Setup of the Upper limit of the temperature range . The minimum difference between upper and lower limit is 20 K . The upper limit can only be set to a value = lower limit + 20 K.
[0.00	Setup of the Lower limit of the signal output . This setting allows an assignment of a certain signal output level to the lower limit of the temperature range. The adjustment range corresponds to the selected output mode (e.g. 0-5 V).
] 5.00	Setup of the Upper limit of the signal output . This setting allows an assignment of a certain signal output level to the upper limit of the temperature range. The adjustment range corresponds to the selected output mode (e.g. 0-5 V).
U °C	Setup of the Temperature unit [°C or °F].
30.0	Setup of the Lower alarm limit . This value corresponds to Alarm 1 [► 4.8.6 Alarms] and is also used as threshold value for relay 1 (if the optional relay board is used).
100.0	Setup of the Upper alarm limit . This value corresponds to Alarm 2 [► 4.8.6 Alarms] and is also used as threshold value for relay 2 (if the optional relay board is used).
XHEAD	Ambient temperature compensation is recommended , especially in applications where a significant temperature difference exists between the object surroundings and the sensing head temperature. Setup of the Ambient temperature compensation . In dependence of the emissivity value of the object, a certain amount of ambient radiation will be reflected from the object surface. To compensate this effect, this function allows the setup of a fixed value which represents the ambient

radiation. If **XHEAD** is shown the ambient temperature value will be taken from the head-internal probe. To return to **XHEAD** press **Up** and **Down** simultaneously.

M 01

Setup of the **Multidrop address**. In a RS485 network each sensor will need a specific address. This menu item will only be shown if a RS485 interface board is plugged in. For using the **RS422** mode, press once the down button on M01.

B 9.6

Setup of the **Baud rate** for digital data transfer.

CTlaser 4M

Display	Mode [Sample]	Display
TPROC 320.9	Process temperature (after signal processing) [320,9 °C]	fixed
T INT 50.1	Detector Temperature [50,1 °C]	fixed
T BOX 38.6	Electronic box Temperature [38,6 °C]	fixed
EMISS 1.000	Emissivity [1,000]	0.100 ... 1.100
TRANS 1.000	Transmission [1,000]	0.100 ... 1.100
AVG 0.020	Signal output Average [0,020 s]	AVG 0.000 = inactive/ 0.1 ... 65 s
HOLD	OFF	OFF/ PEAK/ VALL/ APEAK/ AVALL
H TIM	PEAK/ VALL	0...65 s (65 = infinity)
H TH	APEAK/ AVALL	Starting temperature...end temperature
H HY	APEAK/ AVALL	Hysteresis setting in °C/°F
U °C	Temperature unit [°C]	°C/ °F
M 01	Multidrop address [1] (only with RS485 interface) RS422 mode	01 ... 32 RS422 (Press Down button on M01)
BAUD 115.2K	Baud rate in kBaud [115]	115.2 / 921.6 kBaud
S ON	Laser Sighting	ON/ OFF

Setup	Description
EMISS 1.000	Setup of Emissivity . Pressing Up increases the value, Down decreases the value (also valid for all further functions). The emissivity is a material constant factor to describe the ability of the body to emit infrared energy [► 9 Emissivity].
TRANS 1.000	Setup of Transmissivity . This function is used if an optical component (protective window, additional optics e.g.) is mounted between sensor and object. The standard setting is 1.000 = 100 % (if no protective window etc. is used).
AVG 0.020	Setup of Average time . In this mode an arithmetic algorithm will be performed to smoothen the signal. The set time is the time constant. This function can be combined with all other post processing functions. The shortest value is 0,001 s. If the value is set to 0.0 the function is deactivated.
HOLD	Setup of signal processing . By pressing Up or Down the mode can be selected. PEAK: Setup of Peak hold . In this mode the sensor is waiting for descending signals. If the signal descends the algorithm maintains the previous signal peak for the specified time. After the hold time the signal will drop down to the second highest value or will descend by 1/8 of the difference between the previous peak and the minimum value during the hold time. This value will be held again for the specified time. After this the signal will drop down with slow time constant and will follow the current object temperature. If the value is set to 0.0 the display will show --- (function deactivated).

VALL: Setup of **Valley hold**. In this mode the sensor waits for ascending signals. The definition of the algorithm is according to the peak hold algorithm (inverted).

If the value is set to **0.0** the function deactivated.

APEAK (Advanced Peak Hold): In this mode the sensor waits for local peak values. Peak values which are lower than their predecessors will only be taken over if the temperature has fallen below the **Threshold** value beforehand. If **Hysteresis** is activated a peak in addition must decrease by the value of the hysteresis before the algorithm takes it as a new peak value.

AVALL (Advanced Valley Hold): This mode is the inverted function of Advanced Peak hold. The sensor waits for local minima. Minimum values which are higher than their predecessors will only be taken over if the temperature has exceeded the **Threshold** value beforehand. If **Hysteresis** is activated a minima in addition must increase by the value of the hysteresis before the algorithm takes it as a new minimum value.

U °C

Setup of the **Temperature unit** [°C or °F].

M 01

Setup of the **Multidrop address**. In a **RS485** network each sensor will need a specific address. This menu item will only be shown if a RS485 interface board is plugged in. For using the **RS422** mode, press once the down button on M01.

BAUD 115.2K

Setup of the **Baud rate** for digital data transfer.

S OFF

Activating (**ON**) and Deactivating (**OFF**) of an optional **Sighting Laser** [► 5.2 Aiming laser]. By pressing **Up** or **Down** a voltage of 3 VDC will be switched to the **PINK** connection pin on the mainboard.

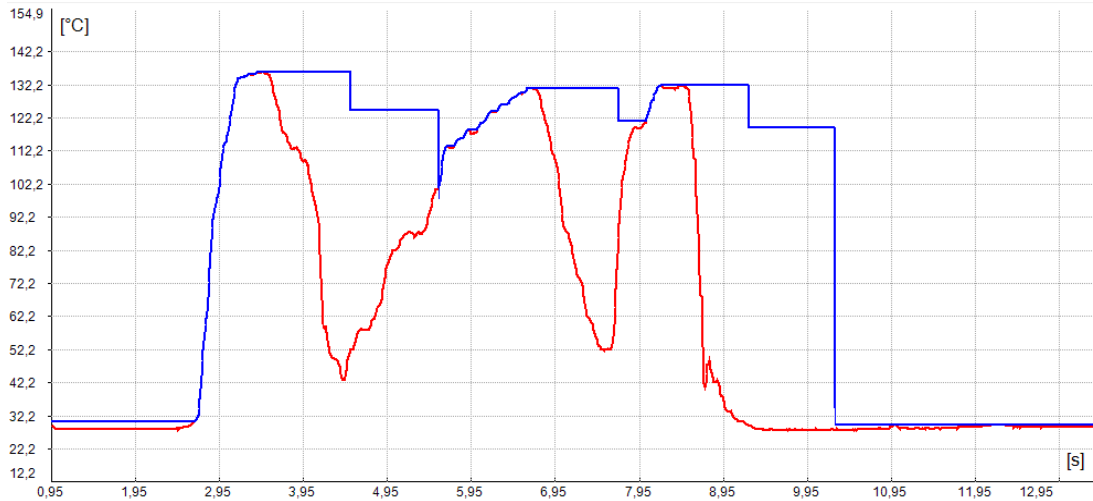
Peak picking function

For a detection of fast hotspots (detection time 90 μs) the averaging time must be set to 0.0 s.



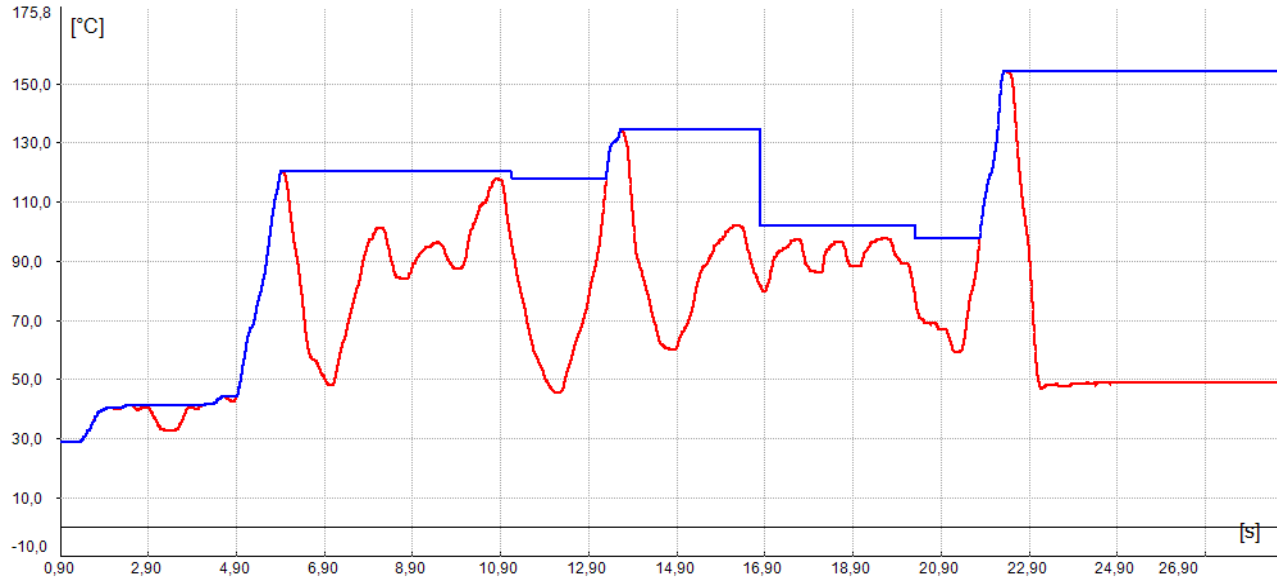
You can display the process temperature T_{Proc} (with post processing) and also the current average temperature T_{Avg} (without any post processing) in the diagram. In this way the result and functionality of the selected post processing features can easily be traced and controlled.

Signal Graphs



— T_{Proc} with Peak Hold (Hold time = 1s)

— T_{Avg} without post processing



- T_{Proc} with Advanced peak hold (Threshold = 80 °C/ Hysteresis = 20 °C)
- T_{Avg} without post processing

5.2 Aiming laser

The CTlaser has an integrated double laser aiming which helps for the alignment of the sensor. Within the two laser points lies the measurement spot. At the focus point of the according optics [**► 2.5 Optical charts**] both lasers are crossing and showing as one dot the minimum spot. This enables an alignment of the sensor to the object.



This device contains a **Class 2 laser** according to IEC 60825-1.

Laser radiation is emitted in the visible wavelength range. Direct eye exposure should be avoided. Do not stare into the laser beam or direct the beam toward other persons or animals. Be aware that laser radiation can be reflected by shiny or reflective surfaces and may cause unintended eye exposure.



The two laser points mark the position of the measuring spot, but not its exact size. The exact size of the measurement spot can be found in the optical charts [**► 2.5 Optical charts**].



- At ambient temperatures $> 50\text{ °C}$ the laser will be switched off automatically.
- The laser should only be used for sighting and positioning of the sensor. A permanent use of the laser can reduce the lifetime of the laser diodes.
- Furthermore, in a permanent use of the laser, the measurement accuracy can be affected.
- Switching the laser during the measurement the accuracy can be shortly affected

The laser can be activated and deactivated via the programming keys on the unit or via the software. If the laser is activated a yellow LED is shining (beside temperature display).

After switching the device off and on again, the laser remains deactivated by default.

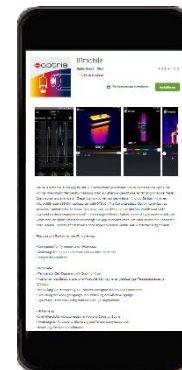
5.3 Error messages

The display of the sensor can show the following error messages:

LT/ LTF/ MT/ F2/ F6/ G5/ G7/ P7 models:		05M/ 1M/ 2M/ 3M models:	
OVER	Object temperature too high	1. digit:	
UNDER	Object temperature too low	0x	No error
^^^CH	Head temperature too high	1x	Head temperature probe short circuit to GND
vwCH	Head temperature too low	2x	Box temperature too low
		4x	Box temperature too high
		6x	Box temperature probe disconnected
		8x	Box temperature probe short circuit to GND
		2. digit:	
		x0	No error
		x2	Object temperature too high
		x4	Head temperature too low
		x8	Head temperature too high
		xC	Head temperature probe disconnected

6 IRmobile app

The CTlaser sensor has a direct connection to an Android smartphone or tablet. All you have to do is download the IRmobile app for free in the Google Play store. This can also be done via the QR code. An IR app connector is required for connection to the device (**Part-No.: ACCTIAC**).



With IRmobile it is possible to monitor and analyse your infrared temperature measurement on a connected smartphone or tablet. This app works on most Android devices running 5.0 or higher with a micro USB or USB-C port supporting USB-OTG (On The Go). It is easy to operate: after you plug your CTlaser device to your phone or tablet, the app will start automatically. The device is powered by your phone. Different digital temperature values can be displayed in the temperature time diagram. You can easily zoom-in the diagram to see more details and small signal changes.

IRmobile app features:

- Temperature time diagram with zoom function
- Digital temperature values
- Setup of emissivity, transmissivity and other parameters
- Scaling of the analog output and setting of the alarm output
- Change of temperature unit: Celsius or Fahrenheit
- Saving/loading of configurations and T/t diagrams
- Restore factory default sensor settings
- Integrated simulator



Supported for:

- Optris pyrometers: Compact series, high performance series and video thermometers
- Optris IR cameras: PI and Xi series
- For android devices running 5.0 or higher with a micro USB or USB-C port supporting USB-OTG (On The Go)

7 Software CompactConnect/ CompactPlus Connect

Minimum system requirements:



- Windows 7, 8, 10, 11
- USB interface
- Hard disc with at least 30 MByte of free space
- At least 128 MByte RAM
- CD-ROM drive



- A detailed description is available on the Optris website.
- Software CompactConnect for LT/ LTF/ 05M/ 1M/ 2M/ 3M/ MT/ F2/ F6/ G5/ G7/ P7
- Software CompactPlus Connect for 4M

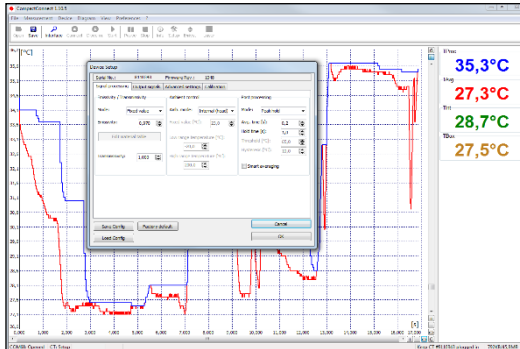
7.1 Installation

The software can be downloaded under <https://optris.com/software/>. Choose either CompactConnect or CompactPlus Connect, depending on your device. Unzip and open the program and start the **CDsetup.exe**. Follow the instructions of the wizard until the installation is finished.

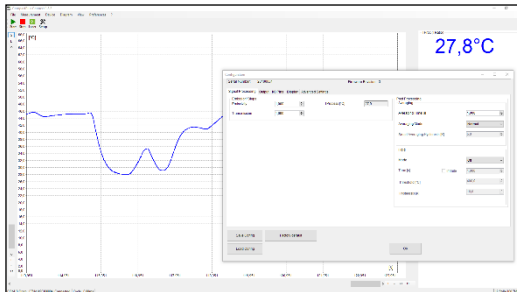
The installation wizard will place a launch icon on the desktop and in the start menu:

[Start]\Programs\CompactConnect or **[Start]\Programs\CompactPlus Connect**.

If you want to uninstall the software from your system, please use the **uninstall icon** in the start menu.



CompactConnect



CompactPlus Connect

Main Features:

- Graphic display for temperature trends and automatic data logging for analysis and documentation
- Complete sensor setup and remote controlling
- Adjustment of signal processing functions
- Programming of outputs and functional inputs

7.2 Communication settings



For further information see protocol and command description on the software package CompactConnect or CompactPlus Connect in the directory: `\Commands`.

7.2.1 Serial Interface

Baud rate:	9.6...115.2 kBaud (adjustable on the unit or via software) CTlaser 4M: 115.2 or 921.6 kBaud (adjustable on the unit or via software)
Data bits:	8
Parity:	none
Stop bits:	1
Flow control	off

7.2.2 Protocol

All sensors of the CTlaser series are using a binary protocol. Alternatively, they can be switched to an ASCII protocol. To get a fast communication the protocol has no additional overhead with CR, LR or ACK bytes.

7.2.3 ASCII-Protocol

To switch to the ASCII protocol, use the following command:

Decimal:	131
HEX:	0x83
Data, Answer:	byte 1
Result:	0 – Binary protocol 1 – ASCII protocol

7.2.4 Save parameter settings

After switch-on of the CTlaser sensor the flash mode is active. This means, changed parameter settings will be saved in the internal Flash-EEPROM and will be kept also after the sensor is switched off. If the settings need to change continuously the flash mode can be switched off by using the following command:

Decimal:	112
HEX:	0x70
Data, Answer:	byte 1
Result:	0 – Data will be written into the flash memory 1 – Data will not be written into the flash memory

If the flash mode is off, all settings only will be kept as long as the unit is powered. This means that all previous settings are getting lost if the unit is switched off and powered on again. The command 0x71 will poll the current state.

8 Basics of Infrared Thermometry

Depending on the temperature each object emits a certain amount of infrared radiation. A change in the temperature of the object is accompanied by a change in the intensity of the radiation. For the measurement of “thermal radiation” infrared thermometry uses a wavelength ranging between 1 μm and 20 μm . The intensity of the emitted radiation depends on the material. This material contingent constant is described with the help of the emissivity which is a known value for most materials (► **9 Emissivity**).

Infrared thermometers are optoelectronic sensors. They calculate the surface temperature on the basis of the emitted infrared radiation from an object. The most important feature of infrared thermometers is that they enable the user to measure objects contactless. Consequently, these products help to measure the temperature of inaccessible or moving objects without difficulties. Infrared thermometers basically consist of the following components:

- lens
- spectral filter
- detector
- electronics (amplifier/ linearization/ signal processing)

The specifications of the lens decisively determine the optical path of the infrared thermometer, which is characterized by the ratio Distance to Spot size. The spectral filter selects the wavelength range, which is relevant for the temperature measurement. The detector in cooperation with the processing electronics transforms the emitted infrared radiation into electrical signals.

9 Emissivity

9.1 Definition

The intensity of infrared radiation, which is emitted by each body, depends on the temperature as well as on the radiation features of the surface material of the measuring object. The emissivity (ε – Epsilon) is used as a material constant factor to describe the ability of the body to emit infrared energy. It can range between 0 and 100 %. A “blackbody” is the ideal radiation source with an emissivity of 1.0 whereas a mirror shows an emissivity of 0.1.

If the emissivity chosen is too high, the infrared thermometer may display a temperature value which is much lower than the real temperature – assuming the measuring object is warmer than its surroundings. A low emissivity (reflective surfaces) carries the risk of inaccurate measuring results by interfering infrared radiation emitted by background objects (flames, heating systems, chamottes). To minimize measuring errors in such cases, the handling should be performed very carefully and the unit should be protected against reflecting radiation sources.

9.2 Determination of unknown emissivity

- ▶ First determine the actual temperature of the measuring object with a thermocouple or contact sensor. Second, measure the temperature with the infrared thermometer and modify the emissivity until the displayed result corresponds to the actual temperature.
- ▶ If you monitor temperatures of up to 380 °C you may place a special plastic sticker (emissivity dots – **Order No.: ACLSED**) onto the measuring object, which covers it completely. Set the emissivity to 0.95

and take the temperature of the sticker. Afterwards, determine the temperature of the adjacent area on the measuring object and adjust the emissivity according to the value of the temperature of the sticker.

- ▶ Cover a part of the surface of the measuring object with a black, flat paint with an emissivity of 0,98. Adjust the emissivity of your infrared thermometer to 0,98 and take the temperature of the colored surface. Afterwards, determine the temperature of a directly adjacent area and modify the emissivity until the measured value corresponds to the temperature of the colored surface.

CAUTION: On all three methods the object temperature must be different from ambient temperature.

9.3 Characteristic emissivity

In case none of the methods mentioned above help to determine the emissivity you may use the emissivity table ► **Appendix A** and **Appendix B**. These are average values only. The actual emissivity of a material depends on the following factors:

- temperature
- measuring angle
- geometry of the surface
- thickness of the material
- constitution of the surface (polished, oxidized, rough, sandblast)
- spectral range of the measurement
- transmissivity (e.g. with thin films)

Appendix A – Table of emissivity for metals

Material		typical Emissivity			
		1,0 μm	1,6 μm	5,1 μm	8-14 μm
Spectral response					
Aluminium	non oxidized	0,1-0,2	0,02-0,2	0,02-0,2	0,02-0,1
	polished	0,1-0,2	0,02-0,1	0,02-0,1	0,02-0,1
	roughened	0,2-0,8	0,2-0,6	0,1-0,4	0,1-0,3
	oxidized	0,4	0,4	0,2-0,4	0,2-0,4
Brass	polished	0,35	0,01-0,05	0,01-0,05	0,01-0,05
	roughened	0,65	0,4	0,3	0,3
	oxidized	0,6	0,6	0,5	0,5
Copper	polished	0,05	0,03	0,03	0,03
	roughened	0,05-0,2	0,05-0,2	0,05-0,15	0,05-0,1
	oxidized	0,2-0,8	0,2-0,9	0,5-0,8	0,4-0,8
Chrome		0,4	0,4	0,03-0,3	0,02-0,2
Gold		0,3	0,01-0,1	0,01-0,1	0,01-0,1
Haynes	alloy	0,5-0,9	0,6-0,9	0,3-0,8	0,3-0,8
Inconel	electro polished	0,2-0,5	0,25	0,15	0,15
	sandblast	0,3-0,4	0,3-0,6	0,3-0,6	0,3-0,6
	oxidized	0,4-0,9	0,6-0,9	0,6-0,9	0,7-0,95
Iron	non oxidized	0,35	0,1-0,3	0,05-0,25	0,05-0,2
	rusted		0,6-0,9	0,5-0,8	0,5-0,7
	oxidized	0,7-0,9	0,5-0,9	0,6-0,9	0,5-0,9
	forged, blunt	0,9	0,9	0,9	0,9
	molten	0,35	0,4-0,6		
Iron, casted	non oxidized	0,35	0,3	0,25	0,2
	oxidized	0,9	0,7-0,9	0,65-0,95	0,6-0,95

Material		typical Emissivity			
		1,0 μm	1,6 μm	5,1 μm	8-14 μm
Spectral response					
Lead	polished	0,35	0,05-0,2	0,05-0,2	0,05-0,1
	roughened	0,65	0,6	0,4	0,4
	oxidized		0,3-0,7	0,2-0,7	0,2-0,6
Magnesium		0,3-0,8	0,05-0,3	0,03-0,15	0,02-0,1
Mercury			0,05-0,15	0,05-0,15	0,05-0,15
Molybdenum	non oxidized	0,25-0,35	0,1-0,3	0,1-0,15	0,1
	oxidized	0,5-0,9	0,4-0,9	0,3-0,7	0,2-0,6
Monel (Ni-Cu)		0,3	0,2-0,6	0,1-0,5	0,1-0,14
Nickel	electrolytic	0,2-0,4	0,1-0,3	0,1-0,15	0,05-0,15
	oxidized	0,8-0,9	0,4-0,7	0,3-0,6	0,2-0,5
Platinum black			0,95	0,9	0,9
Silver		0,04	0,02	0,02	0,02
Steel	polished plate	0,35	0,25	0,1	0,1
	rustless	0,35	0,2-0,9	0,15-0,8	0,1-0,8
	heavy plate			0,5-0,7	0,4-0,6
	cold-rolled	0,8-0,9	0,8-0,9	0,8-0,9	0,7-0,9
	oxidized	0,8-0,9	0,8-0,9	0,7-0,9	0,7-0,9
Tin non oxidized		0,25	0,1-0,3	0,05	0,05
Titanium	polished	0,5-0,75	0,3-0,5	0,1-0,3	0,05-0,2
	oxidized		0,6-0,8	0,5-0,7	0,5-0,6
Wolfram polished		0,35-0,4	0,1-0,3	0,05-0,25	0,03-0,1
Zinc	polished	0,5	0,05	0,03	0,02
	oxidized	0,6	0,15	0,1	0,1

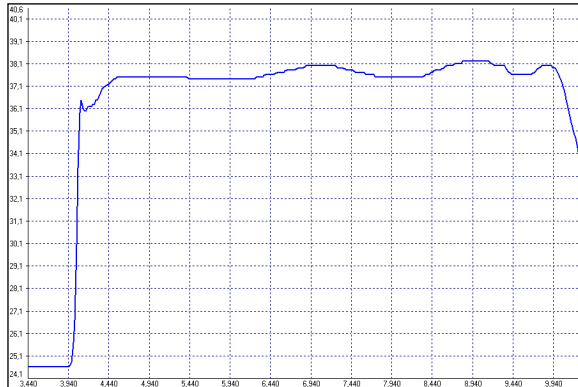
Appendix B – Table of emissivity for non-metals

Material	typical Emissivity				
	Spectral response	1,0 μm	2,2 μm	5,1 μm	8-14 μm
Asbestos		0,9	0,8	0,9	0,95
Asphalt				0,95	0,95
Basalt				0,7	0,7
Carbon	non oxidized		0,8-0,9	0,8-0,9	0,8-0,9
	graphite		0,8-0,9	0,7-0,9	0,7-0,8
Carborundum			0,95	0,9	0,9
Ceramic		0,4	0,8-0,95	0,8-0,95	0,95
Concrete		0,65	0,9	0,9	0,95
Glass	plate		0,2	0,98	0,85
	melt		0,4-0,9	0,9	
Grit				0,95	0,95
Gypsum				0,4-0,97	0,8-0,95
Ice					0,98
Limestone				0,4-0,98	0,98
Paint	non alkaline				0,9-0,95
Paper	any color			0,95	0,95
Plastic >50 μm	non transparent			0,95	0,95
Rubber				0,9	0,95
Sand				0,9	0,9
Snow					0,9
Soil					0,9-0,98
Textiles				0,95	0,95
Water					0,93
Wood	natural			0,9-0,95	0,9-0,95

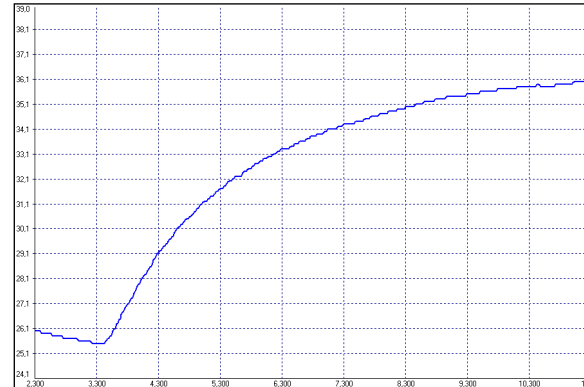
Appendix C – Smart Averaging

The average function is generally used to smoothen the output signal. With the adjustable parameter time this function can be optimal adjusted to the respective application. One disadvantage of the average function is that fast temperature peaks which are caused by dynamic events are subjected to the same averaging time. Therefore those peaks can only be seen with a delay on the signal output.

The function **Smart Averaging** eliminates this disadvantage by passing those fast events without averaging directly through to the signal output.





Signal graph with Smart Averaging function



Signal graph without Smart Averaging function

Appendix D – Declaration of Conformity

EG-Konformitätserklärung EU Declaration of Conformity	
Wir / We	Optris GmbH & Co. KG Ferdinand Buissson Str. 14 D-13127 Berlin
erklären in alleiniger Verantwortung, dass declare on our own responsibility that	die Produktserie optris CTlaser the product group optris CTlaser
den Anforderungen der EMV-Richtlinie 2014/30/EU und der Niederspannungsrichtlinie 2014/35/EU entspricht.	meets the provisions of the EMC Directive 2014/30/EU and the Low Voltage Directive 2014/35/EU.
Angewandte harmonisierte Normen: Applied harmonized standards:	EMV Anforderungen / EMC General Requirements: EN 61326-1:2021 (Grundlegende Prüfanforderungen / Basic requirements) EN 61326-2-3:2021
Gerätesicherheit von Messgeräten / Safety of measurement devices:	EN 61010-1:2010/A1:2019/AC:2019_04 EN 60825-1:2014 + AC:2017 + A11:2021 + A11:2021/AC:2022 (Lasersicherheit / Laser safety)
Beschränkung gefährlicher Stoffe / Restriction of hazardous substances:	EN IEC 63000:2018
Dieses Produkt erfüllt die Vorschriften der Richtlinie 2015/863/EU (RoHS) des Europäischen Parlaments und des Rates vom 4. Juni 2015 zur Beschränkung der Verwendung bestimmter gefährlicher Stoffe in Elektro- und Elektronikgeräten. This product is in conformity with Directive 2015/863/EU (RoHS) of the European Parliament and of the Council of 4 June 2015 on the restriction of the use of certain hazardous substances in electrical and electronic equipment.	Berlin, 19.09.2024 Ort, Datum / place, date
	 Dr. Ulrich Kleinitz CEO

optris CTlaser-MA-E2026-02-A